



Università
Ca' Foscari
Venezia

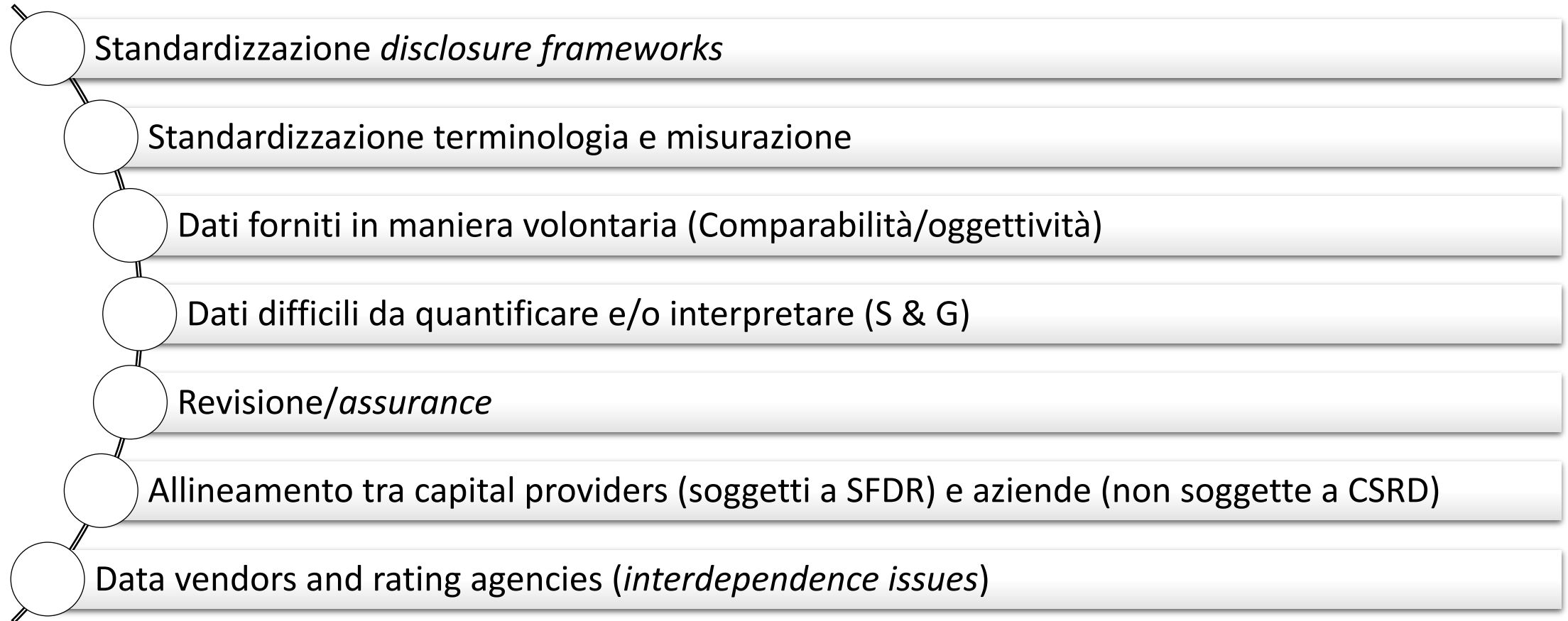


Navigando a vista: I dati e gli score dietro l'integrazione ESG

Anastasia Giakoumelou

Tenure-track assistant Professor, University of Venice Ca' Foscari
Adjunct Professor of Mergers & Acquisitions, Bocconi University
Adjunct Professor of Sustainable Finance, Université Paris 1 Panthéon-Sorbonne & ESCP

Dati ESG: Il grande nemico



L'integrazione 360°

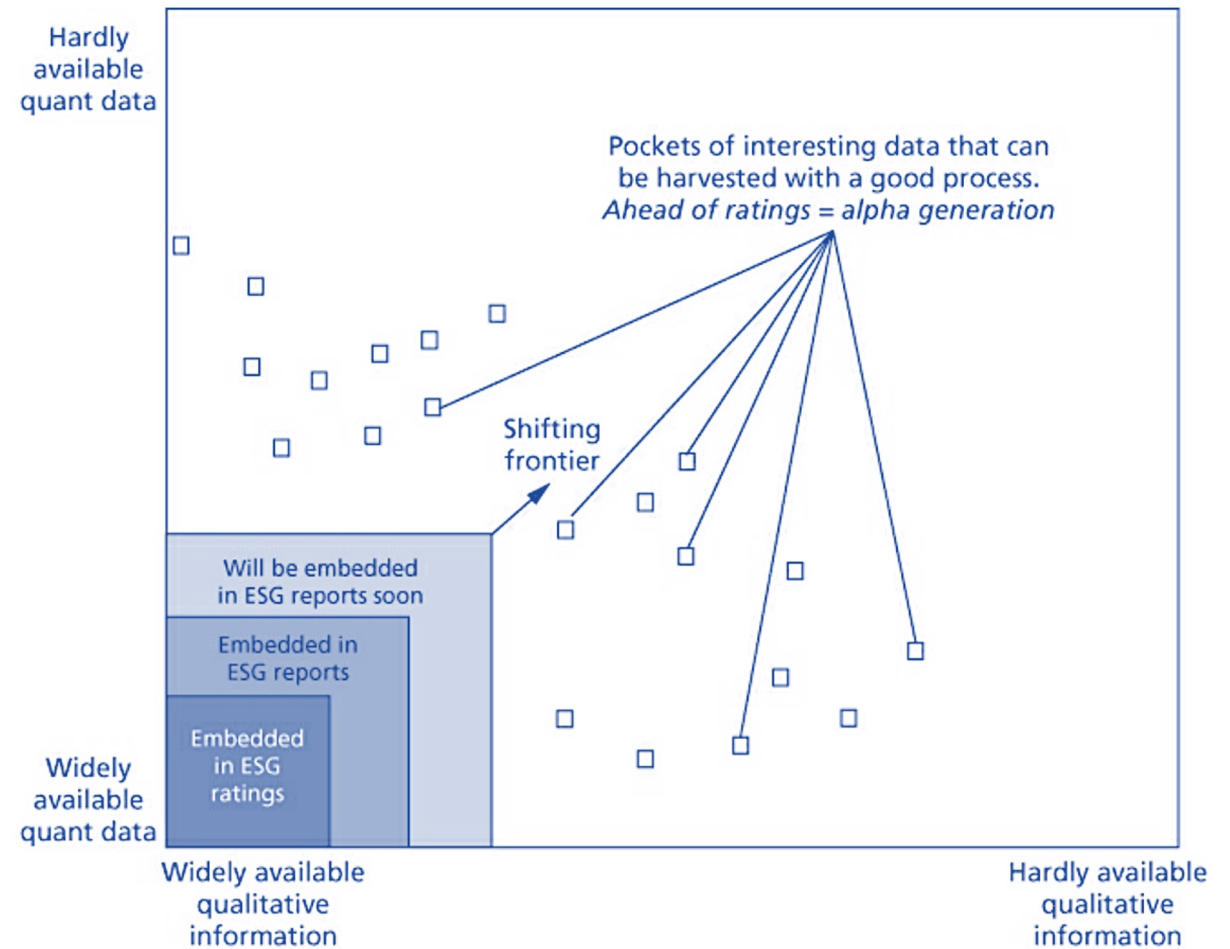
11.700 soggetti NFRD

VS

50.000 soggetti CSRD

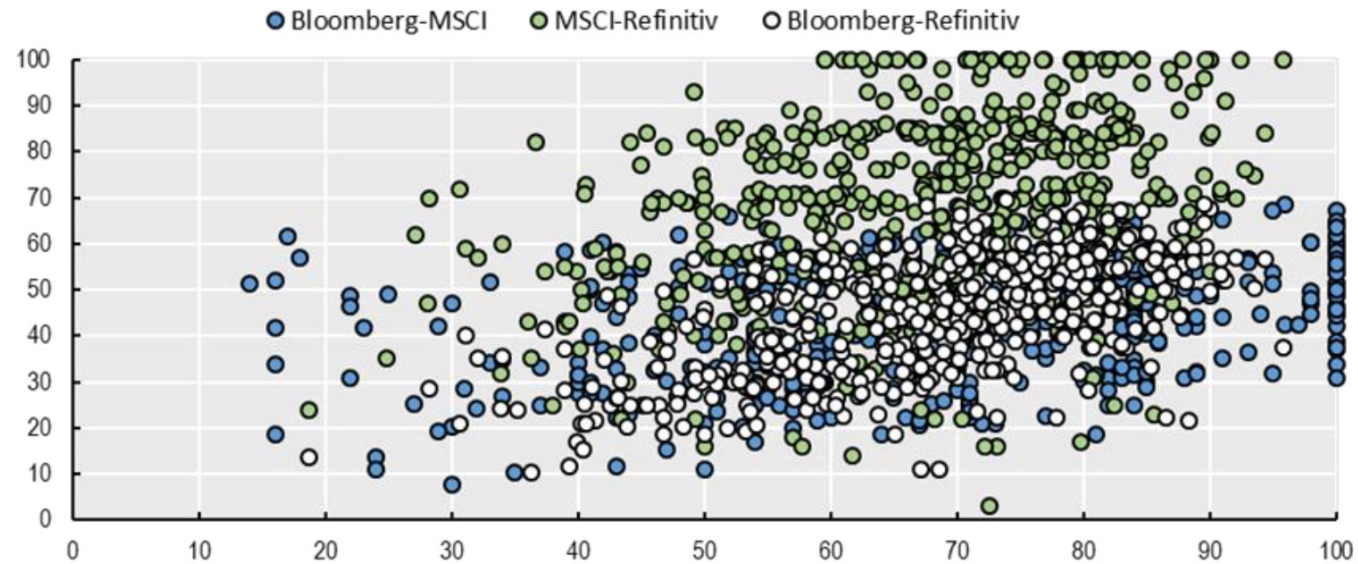
VS

23.233.582 non-financial
businesses in the EU



59 ESG rating providers in EU

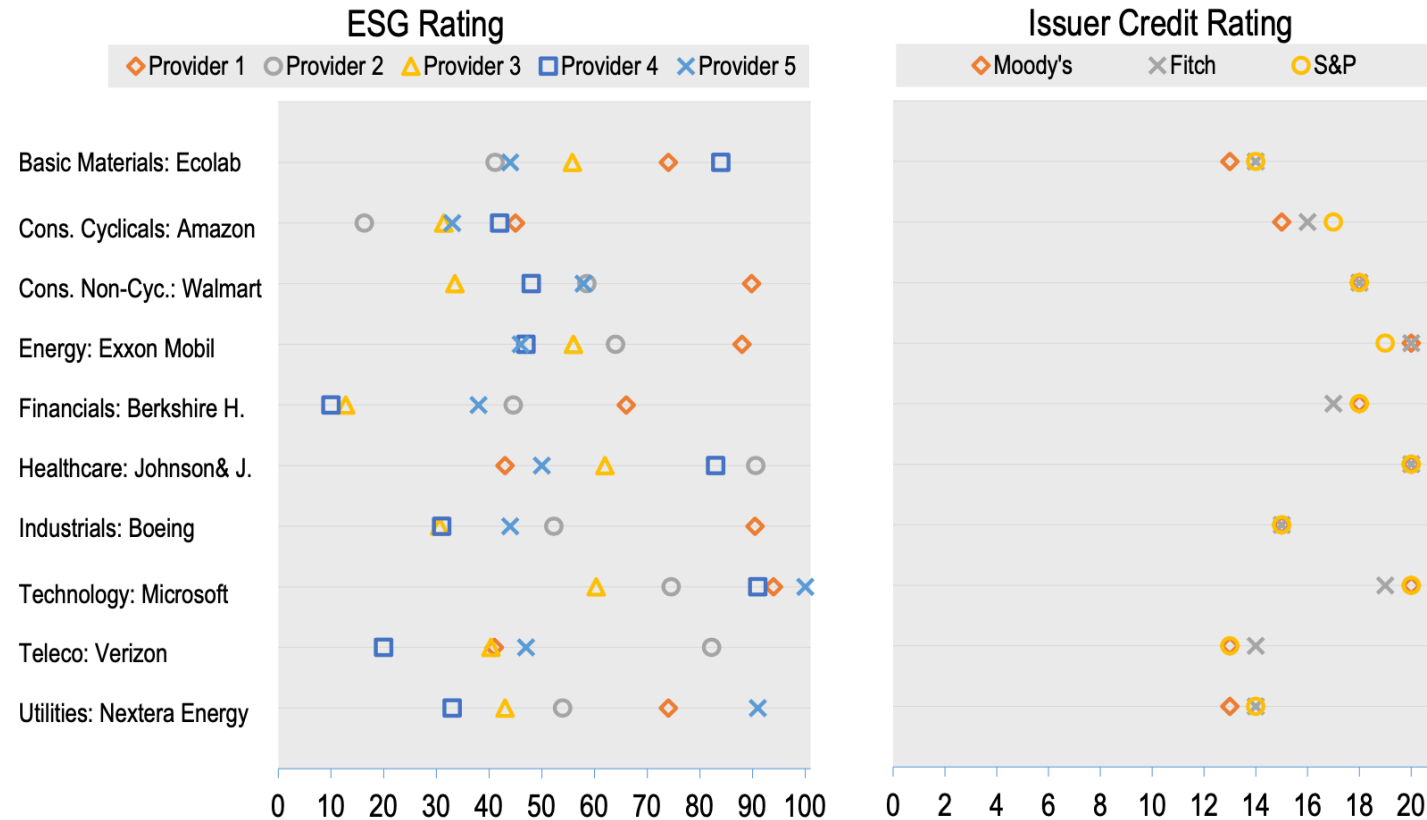
STOXX 600 ESG ratings correlation for different providers



Note: Providers' names in the legend correspond to the Y axis when at the left and to the X axis when at the right (e.g.: Bloomberg-MSCI; Bloomberg = Y axis, MSCI = X axis).

Source: Bloomberg, MSCI, Refinitiv, OECD Staff calculations

La grande bellezza



Note: Sample of public companies selected by largest market capitalisation as to represent different industries in the United States. The issuer credit ratings are transformed using a projection to the scale from 0 to 20, where 0 represents the lowest rating (C/D) and 20 the highest rating (Aaa/AAA).

Source: Refinitiv, Bloomberg, MSCI, Yahoo finance, Moody's, Fitch, S&P; OECD calculations

No one wants to learn by mistakes, but we cannot learn enough from successes to go beyond the state of the art.

Henry Petroski