

The Almaviva logo features the word "Almaviva" in a white, sans-serif font. The letter "A" is stylized with a white waveform graphic integrated into its left side. The background of the top half of the slide is a dark blue gradient with a 3D-rendered globe on the left and several vertical bars of varying heights on the right, suggesting a data visualization or architectural structure.

Almaviva

*Providing Solutions*

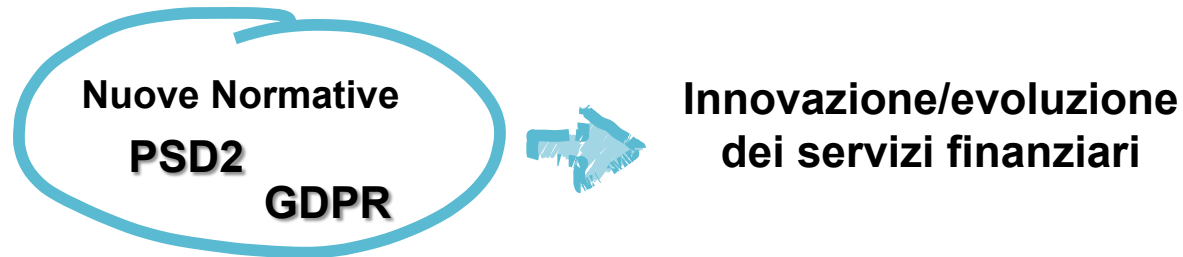
ABI- Salone dei Pagamenti  
Milano, 23 novembre 2017

Roberto Pierantoni  
Product Manager Almaviva Financial Services

**Nuove Normative**

**PSD2**

**GDPR**

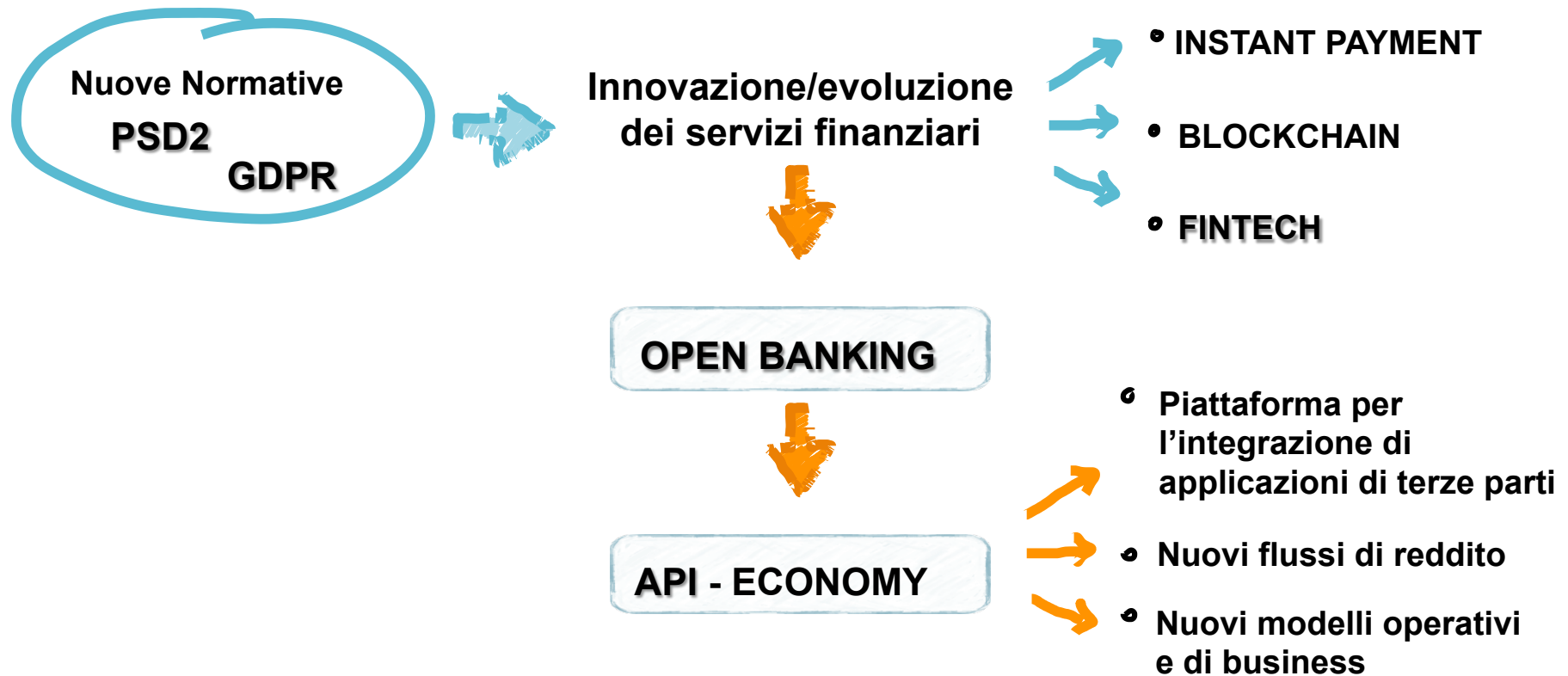




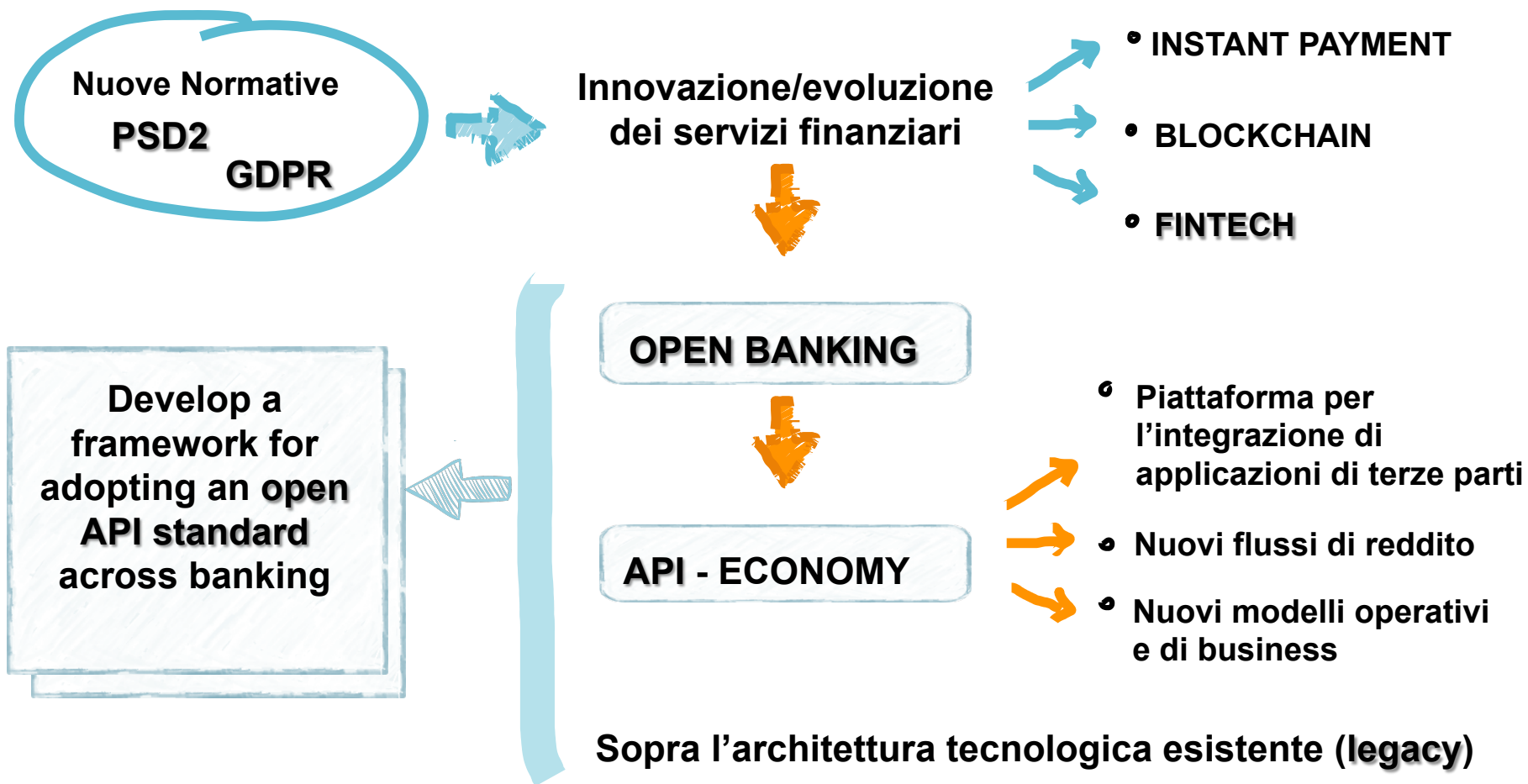




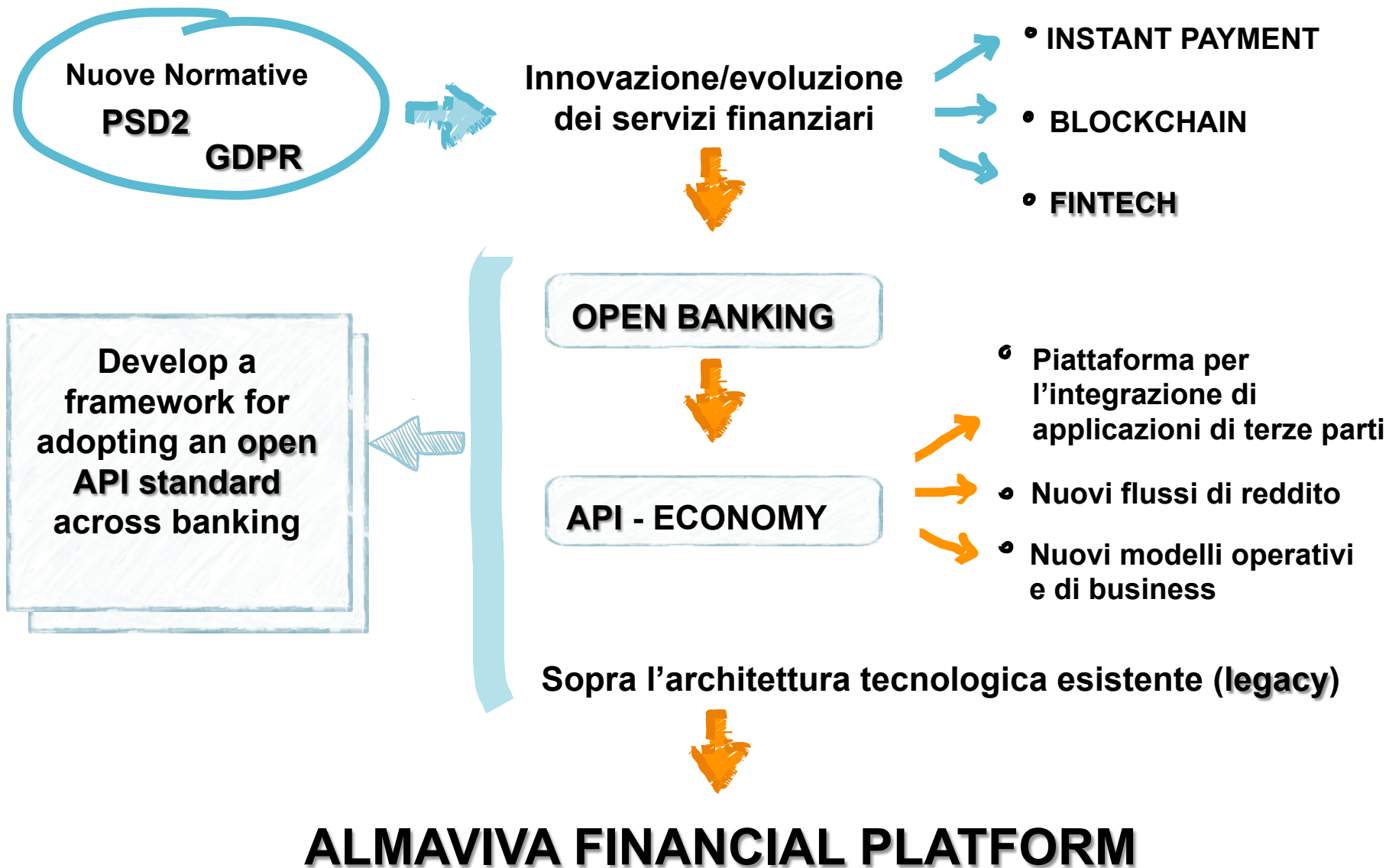
# Trasformazione digitale nel settore finanziario



Sopra l'architettura tecnologica esistente (legacy)







## Payment Service Hub (PSH)

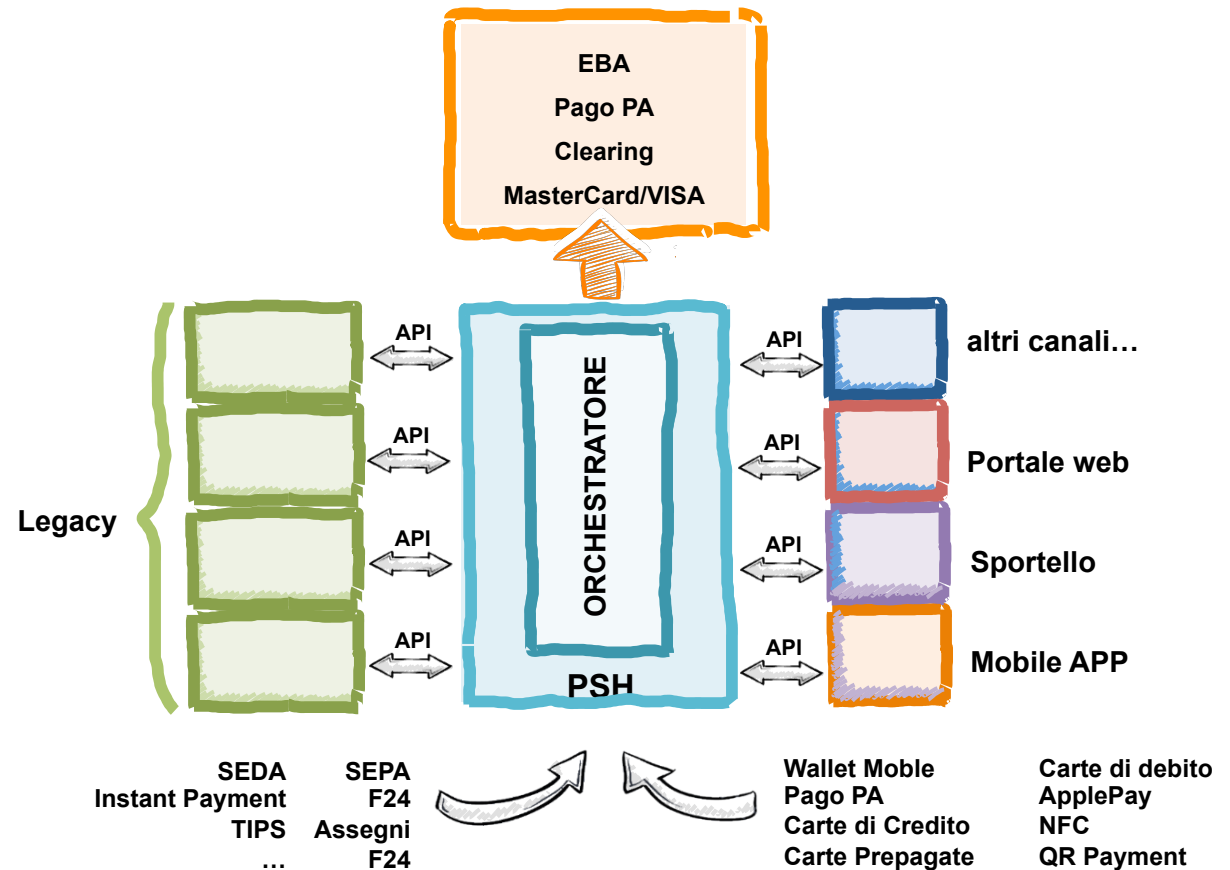
PSH = A payments hub is a flexible platform that enables banks to build their own payments services that can integrate with multiple systems and channels, essentially breaking down the silos present in legacy structures. [bai.org]

## Payment Service Hub (PSH)

PSH = A payments hub is a flexible platform that enables banks to build their own payments services that can integrate with multiple systems and channels, essentially breaking down the silos present in legacy structures. [bai.org]

### Obiettivo

Una piattaforma di pagamento per la realizzazione di nuovi Prodotti e Servizi che permetta alla Banca un ritorno degli investimenti, tramite un Sistema di pagamento moderno e centralizzato.

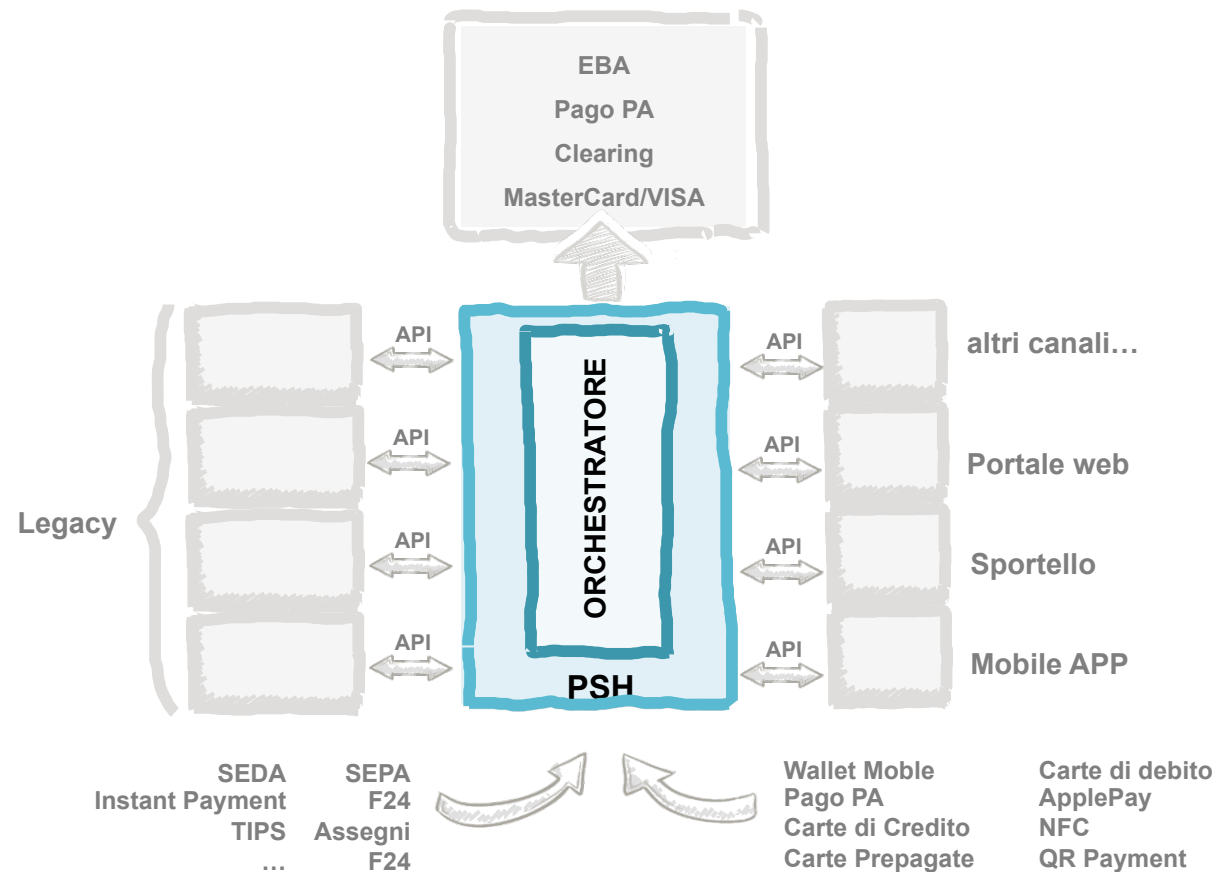


## Payment Service Hub (PSH)

PSH = A payments hub is a flexible platform that enables banks to build their own payments services that can integrate with multiple systems and channels, essentially breaking down the silos present in legacy structures. [bai.org]

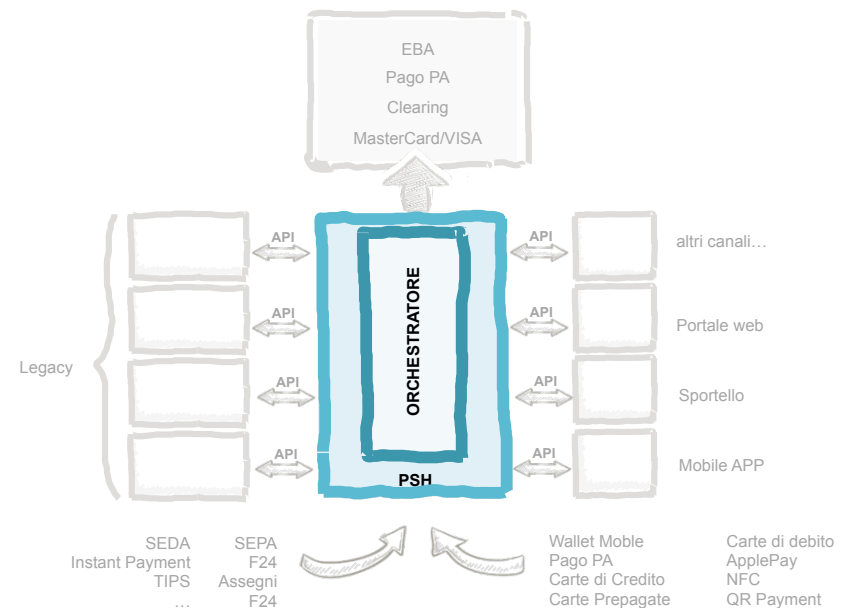
### Obiettivo

Una piattaforma di pagamento per la realizzazione di nuovi Prodotti e Servizi che permetta alla Banca un ritorno degli investimenti, tramite un Sistema di pagamento moderno e centralizzato.



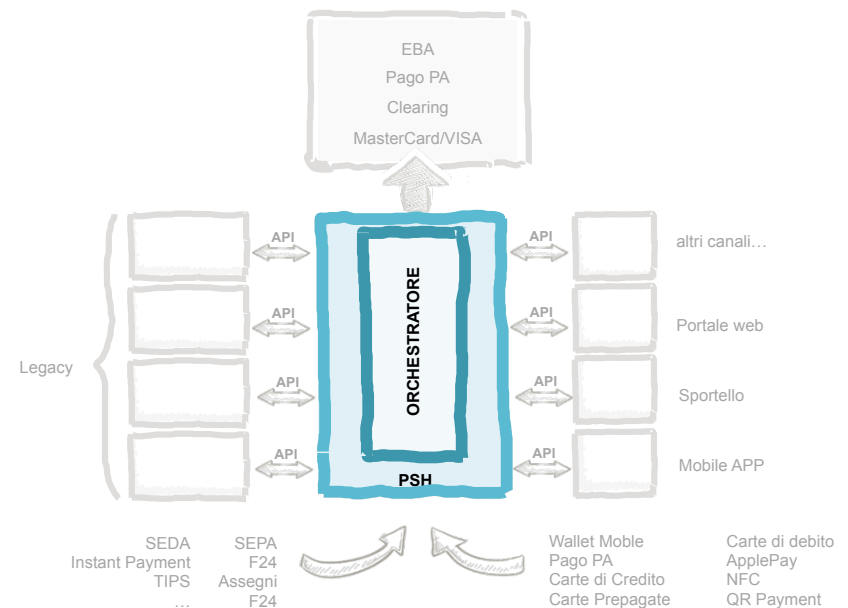
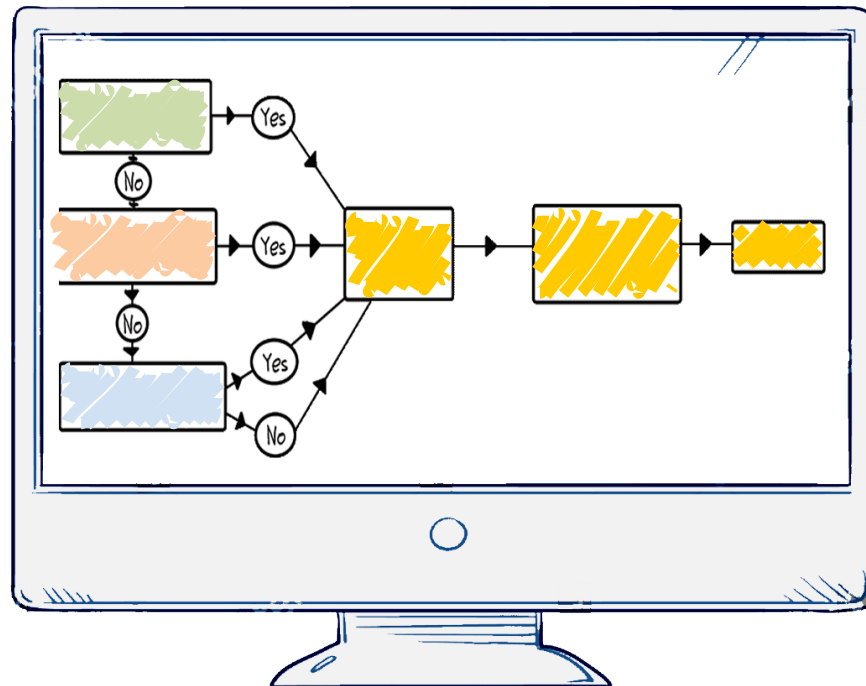
## Payment Service Hub (PSH)

PSH = A payments hub is a flexible platform that enables banks to build their own payments services that can integrate with multiple systems and channels, essentially breaking down the silos present in legacy structures. [bai.org]



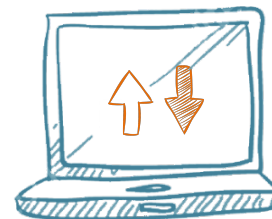
## Payment Service Hub (PSH)

PSH = A payments hub is a flexible platform that enables banks to build their own payments services that can integrate with multiple systems and channels, essentially breaking down the silos present in legacy structures. [bai.org]





Pago PA



Cruscotto  
Posizioni  
Debitorie



Riconciliazioni  
Pagamenti da e  
verso PA

**Roberto Pierantoni**  
Product Manager Almaviva Financial Services

eMail: [R.Pierantoni@Almaviva.it](mailto:R.Pierantoni@Almaviva.it)



**Almaviva**

Via di Casal Boccone, 188 – 190  
00137 Roma  
Italia

[www.almaviva.it](http://www.almaviva.it)