



**AD UN ANNO DALLE LINEE GUIDA SULLA VALUTAZIONE IMMOBILIARE:
STATO DELL'ARTE E NUOVE SFIDE**

Serena Razzi

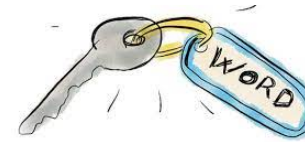
Ufficio Credito e Sviluppo
ABI

CREDITO E FINANZA 2023 - Milano 29 marzo 2023

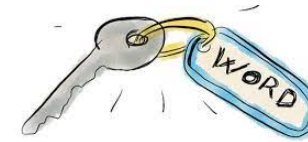
LE PAROLE CHIAVE



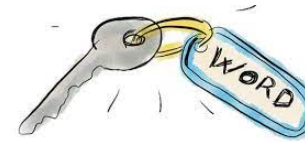
LE PAROLE CHIAVE



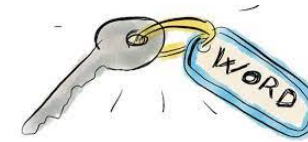
LE PAROLE CHIAVE



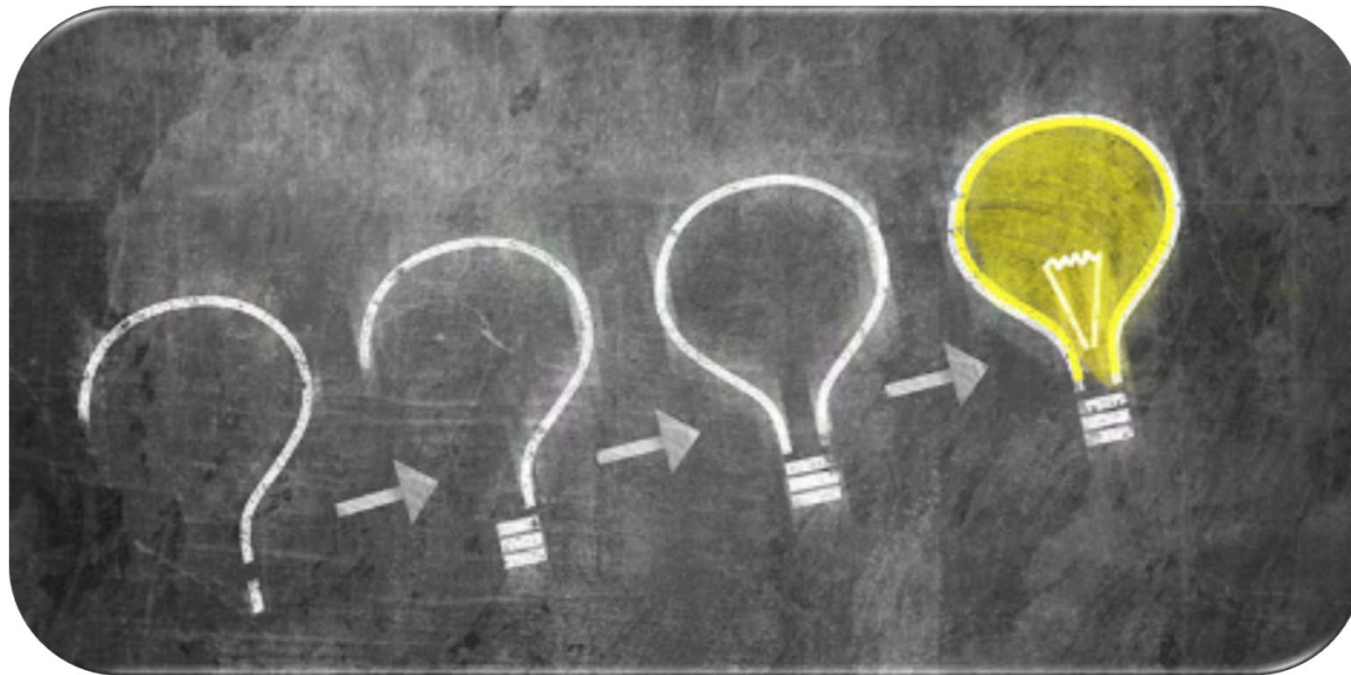
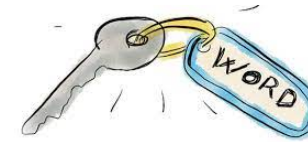
LE PAROLE CHIAVE



LE PAROLE CHIAVE



LE PAROLE CHIAVE



LE PAROLE CHIAVE

