



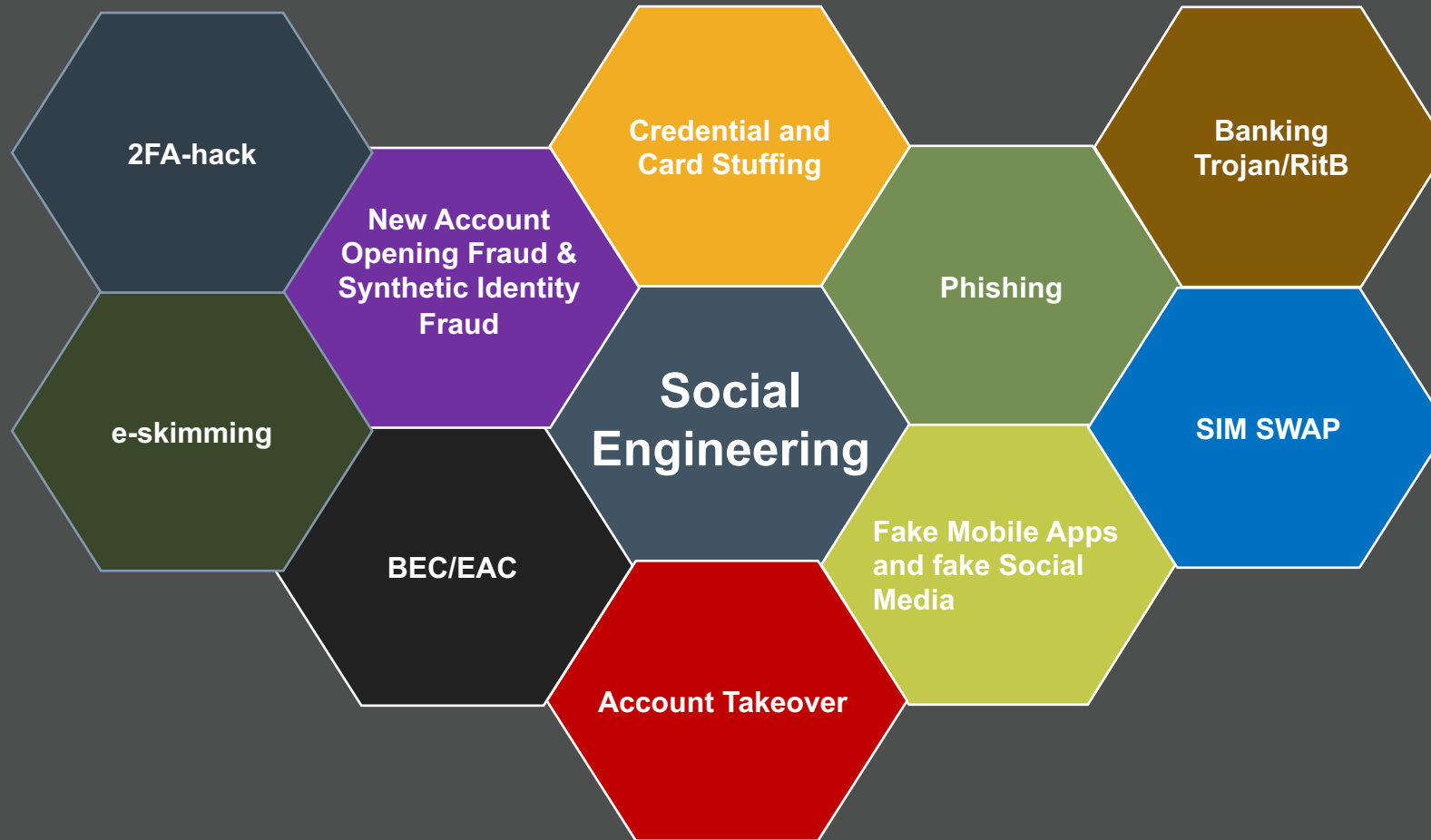
# ABIEventi – BANCHE E SICUREZZA

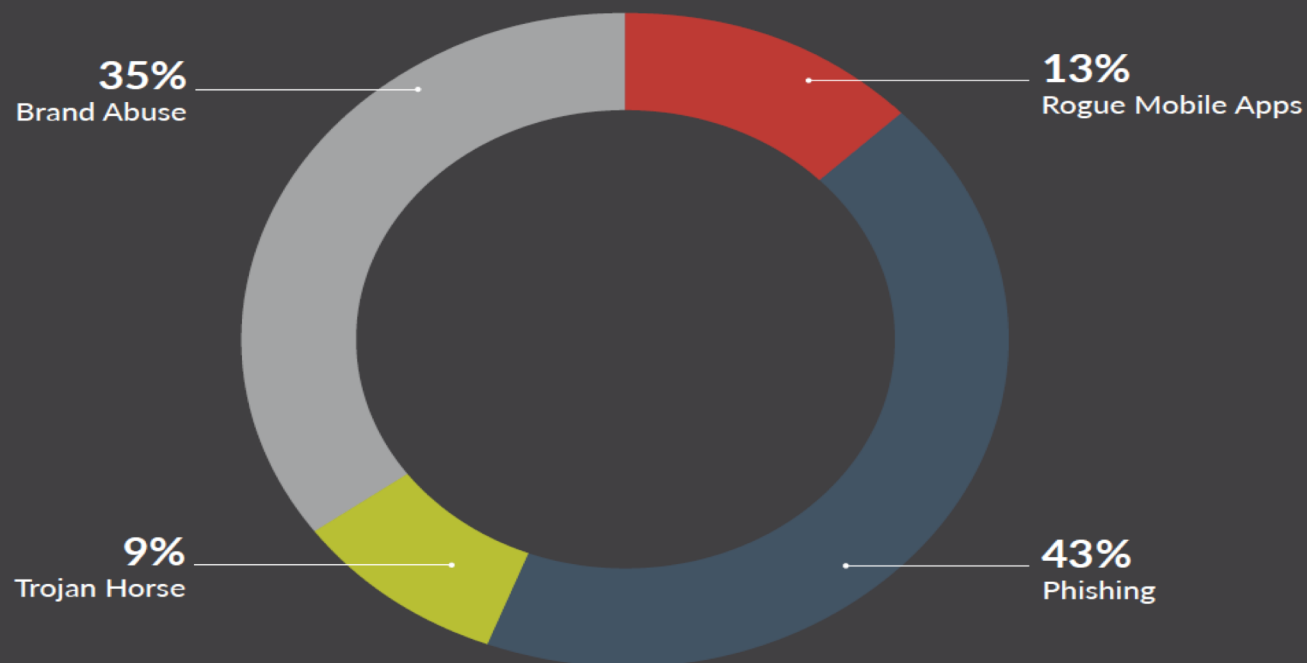
Mario Grossi

VIRTUAL ROOM 1 - PARALLEL A

FRAUD PREVENTION AND MANAGEMENT

# Financial Services has Transformed and Fraud Has Followed





Fraud Attack Trends: Q2 2020

## Fraud Attack Type Distribution

In the second quarter of 2020, RSA identified 46,821 cyber attacks worldwide. The greatest percentage of these were phishing attacks, representing 43% of all attacks identified. The next greatest percentage of attacks were brand abuse attacks, which made up 35% of all attacks (an increase of 13% over the previous quarter). The percentage attributable to Trojan horse attacks remained unchanged from Q1 at 9%, while the percentage attributable to rogue mobile attacks was 13%, down just two percentage points from Q1.

## Fraud Attack Glossary

### Phishing

Cyber attacks attempting to steal personal information from unwitting end-users under false pretenses either by email, phone call (vishing) or SMS text (smishing).

### Trojan Horse

Stealthy malware installed under false pretenses, attempting to steal personal user information.

### Brand Abuse

Online content, such as social media, that misuses an organization's brand with the purpose of misleading users.

### Mobile Application Fraud

Mobile applications using an organization's brand without permission.

IN Q2 2020,

# 20,373

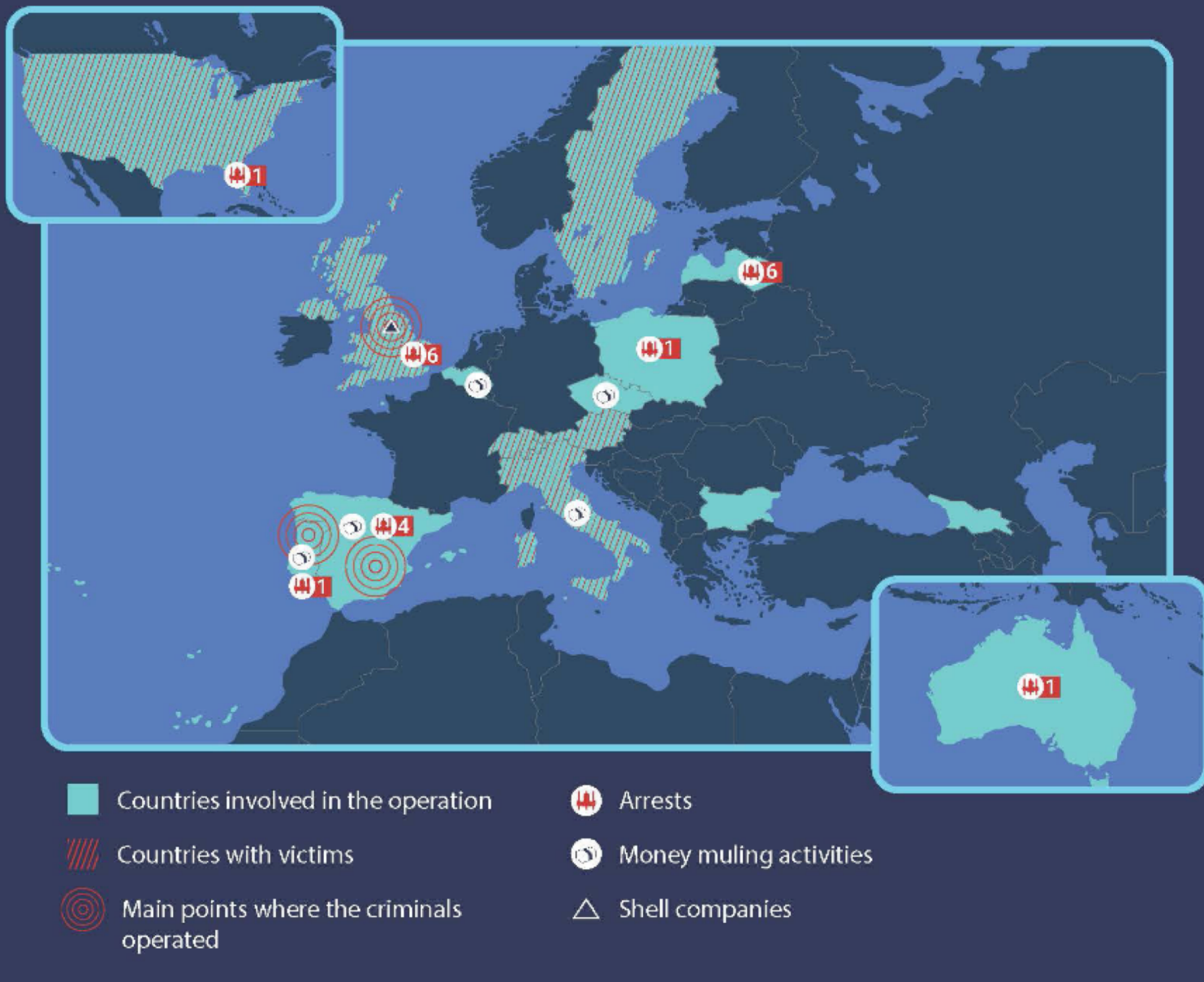
## ATTACKS WERE THE RESULT OF PHISHING—

more than any other  
individual type of attack

# L'ITALIA E LA ROMANIA ELIMINANO LA RETE DI FRODI INFORMATICHE PER 1,5 MILIARDI DI EURO ALL'ANNO DI PRODOTTO

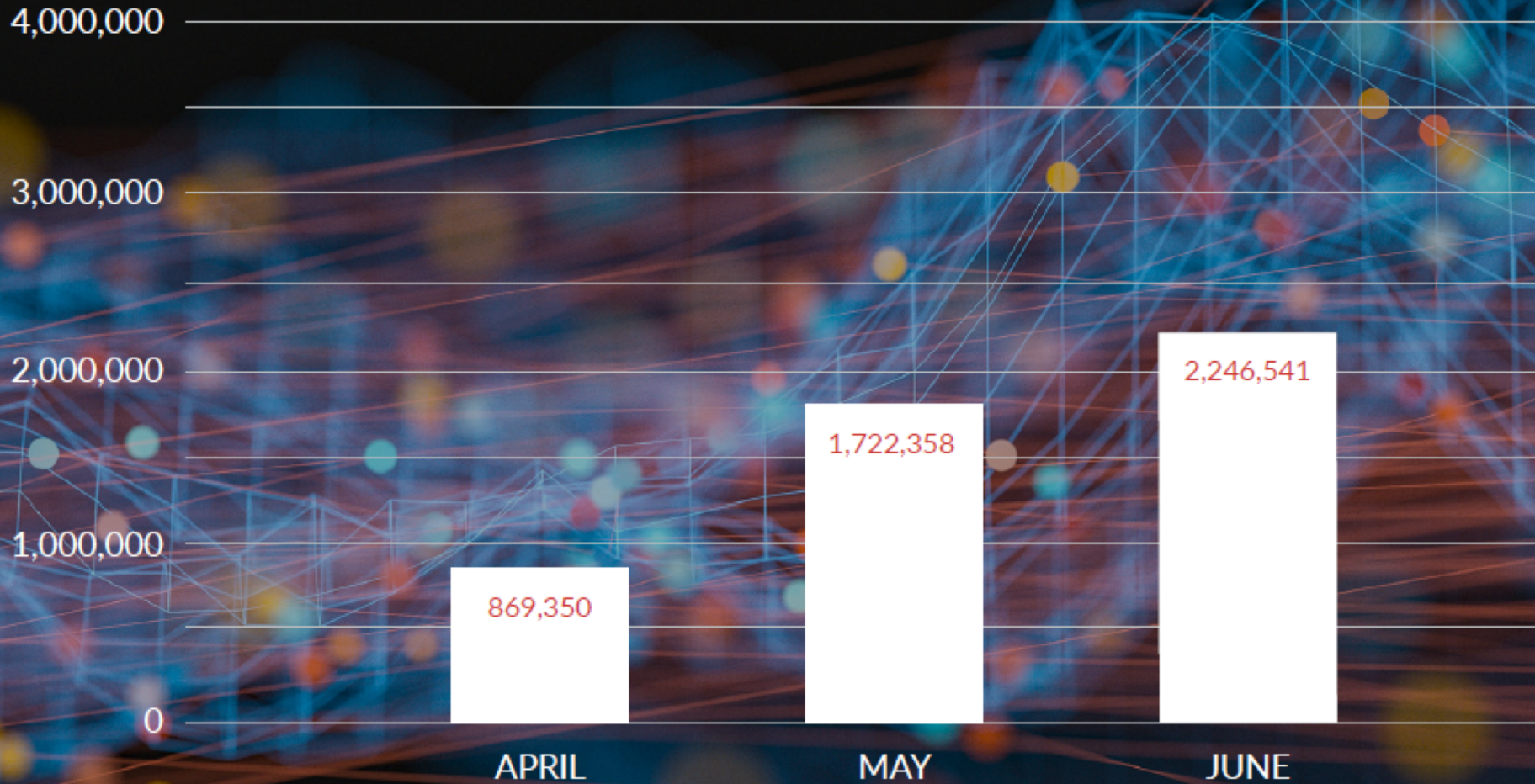
07 luglio 2020

Comunicato stampa



Consumer Fraud Trends: Q2 2020

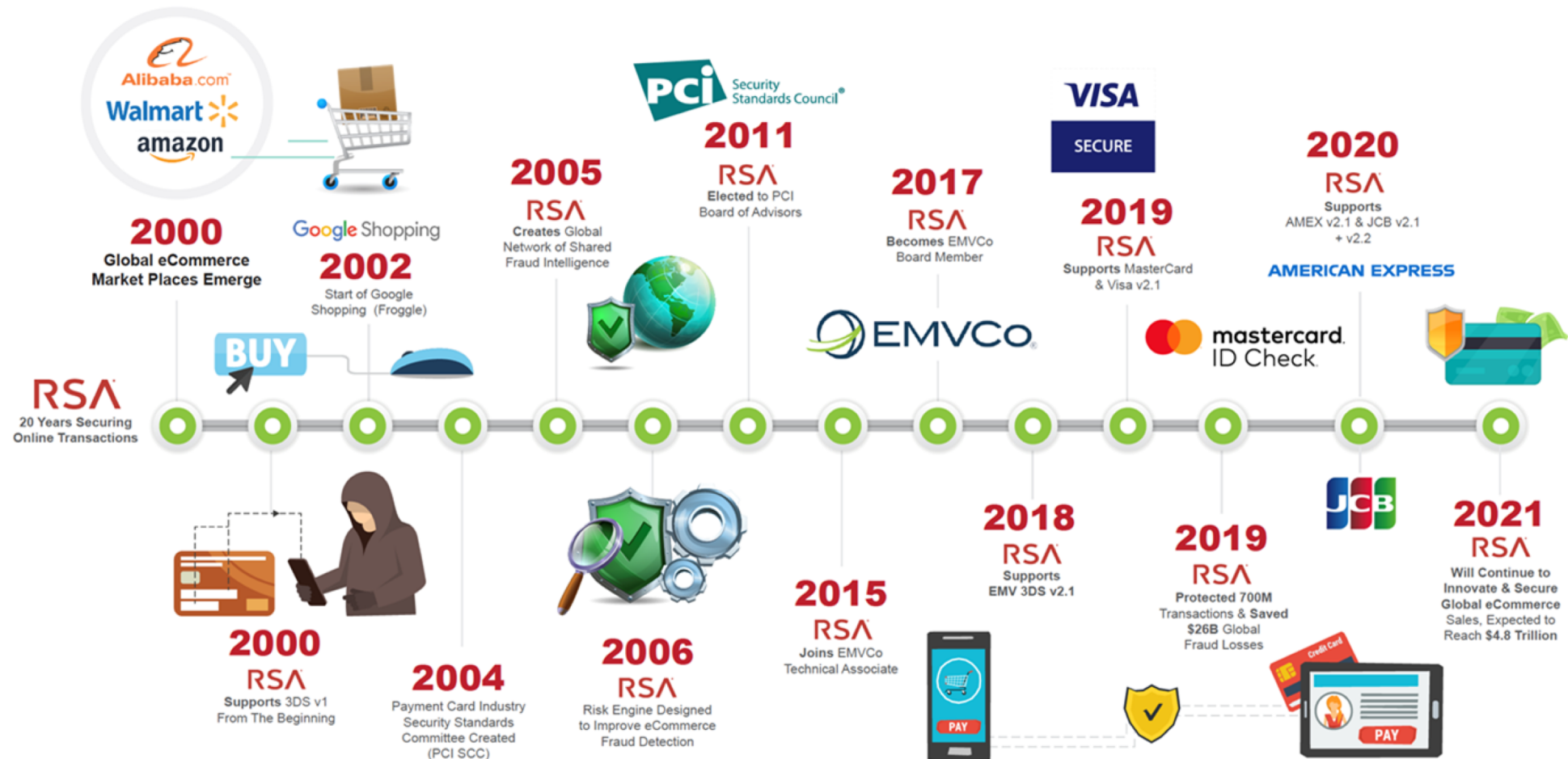
**Compromised Credit Cards Discovered/Recovered by RSA**



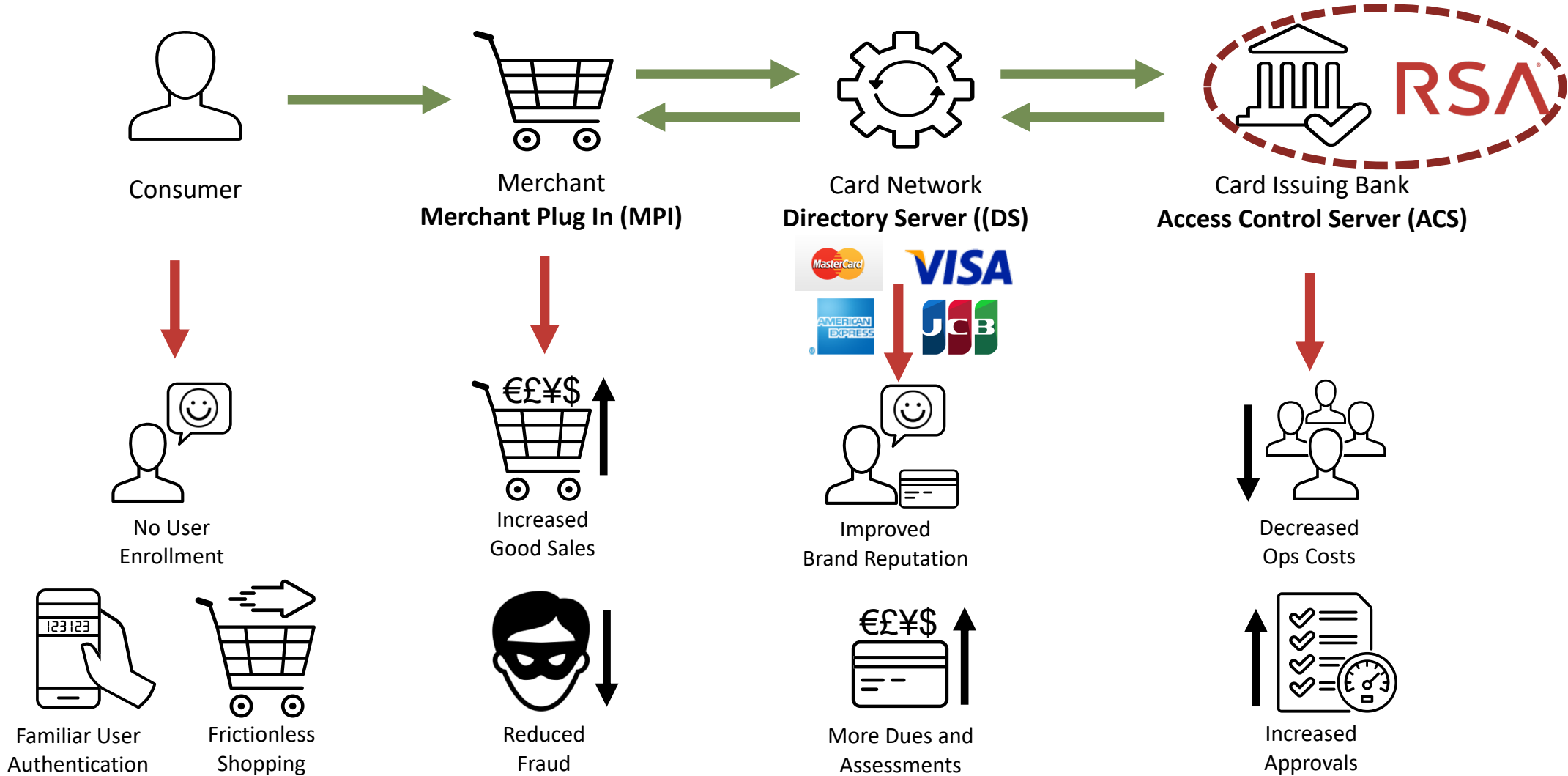
Source: RSA Fraud & Risk Intelligence Service, April 2020-June 2020

# Securing the eCommerce Ecosystem

# 20 years of Securing eCommerce shopping against fraud



# 3-D Secure Provides Simple, Seamless & Secure eCommerce Shopping



# The complex world of e-commerce



The image features the RSA logo in white, bold, sans-serif capital letters, centered on a solid red background. A subtle, light-red geometric pattern of interconnected lines and dots is visible across the entire background. The letters 'R', 'S', and 'A' are closely spaced, with a small registered trademark symbol (®) positioned to the upper right of the 'A'.

**RSA<sup>®</sup>**